

Module 5 L07

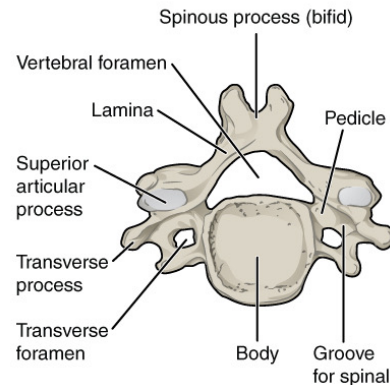
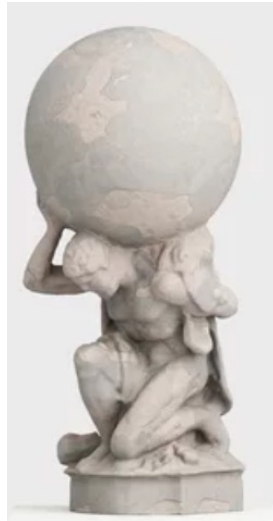
Vertebral Column: Cervical Vertebrae

Dr. Lisa Brinn

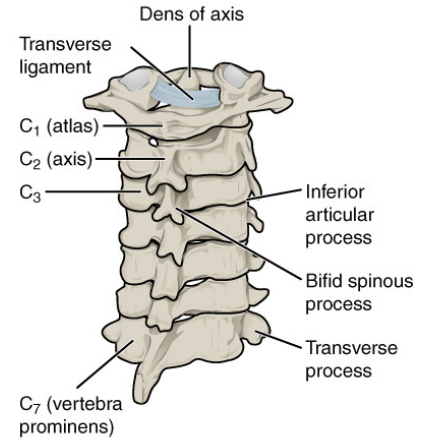
lbrinn@fiu.edu

7. Cervical Vertebrae Bone Features

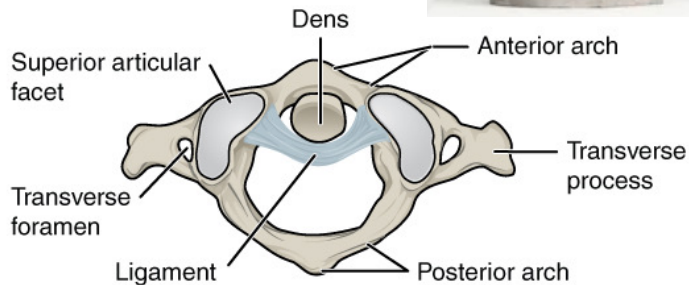
- Vertebral foramina
- Transverse foramen
- Bifid
- Atlas C1
- Axis C2



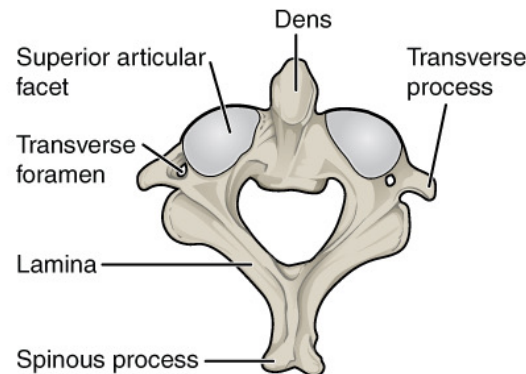
SUPERIOR



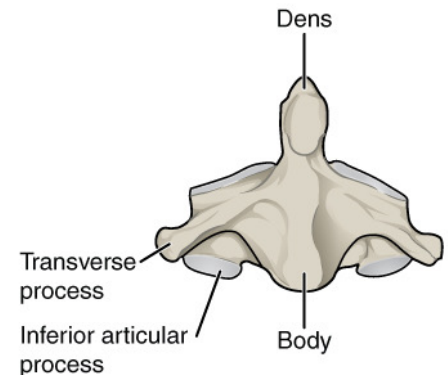
POSTERIOR



SUPERIOR VIEW OF ATLAS

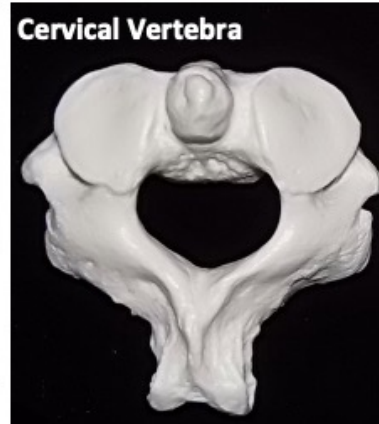


SUPERIOR VIEW OF AXIS



ANTERIOR VIEW OF AXIS

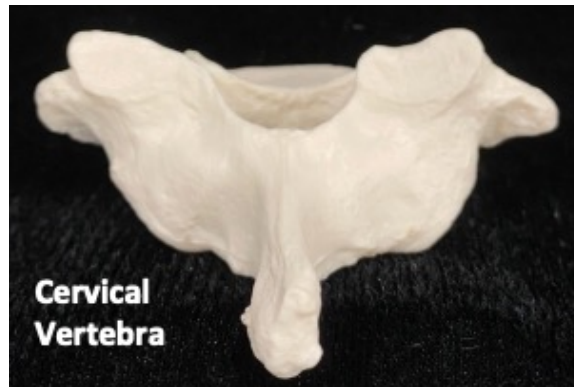
Cervical Vertebrae



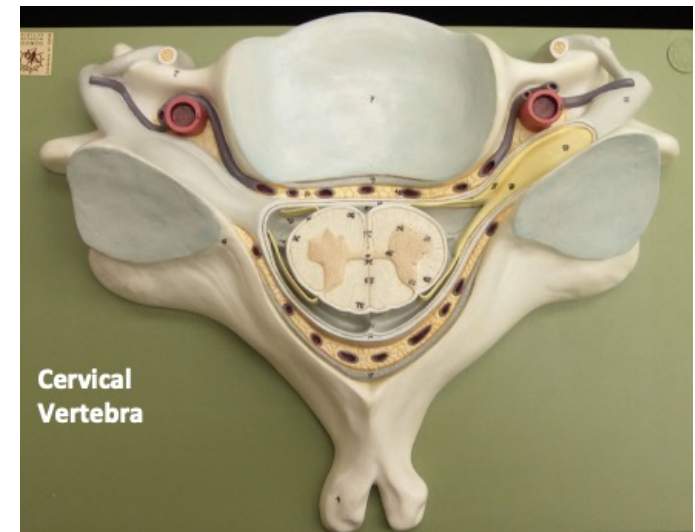
SUPERIOR



SUPERIOR



POSTERIOR



SUPERIOR